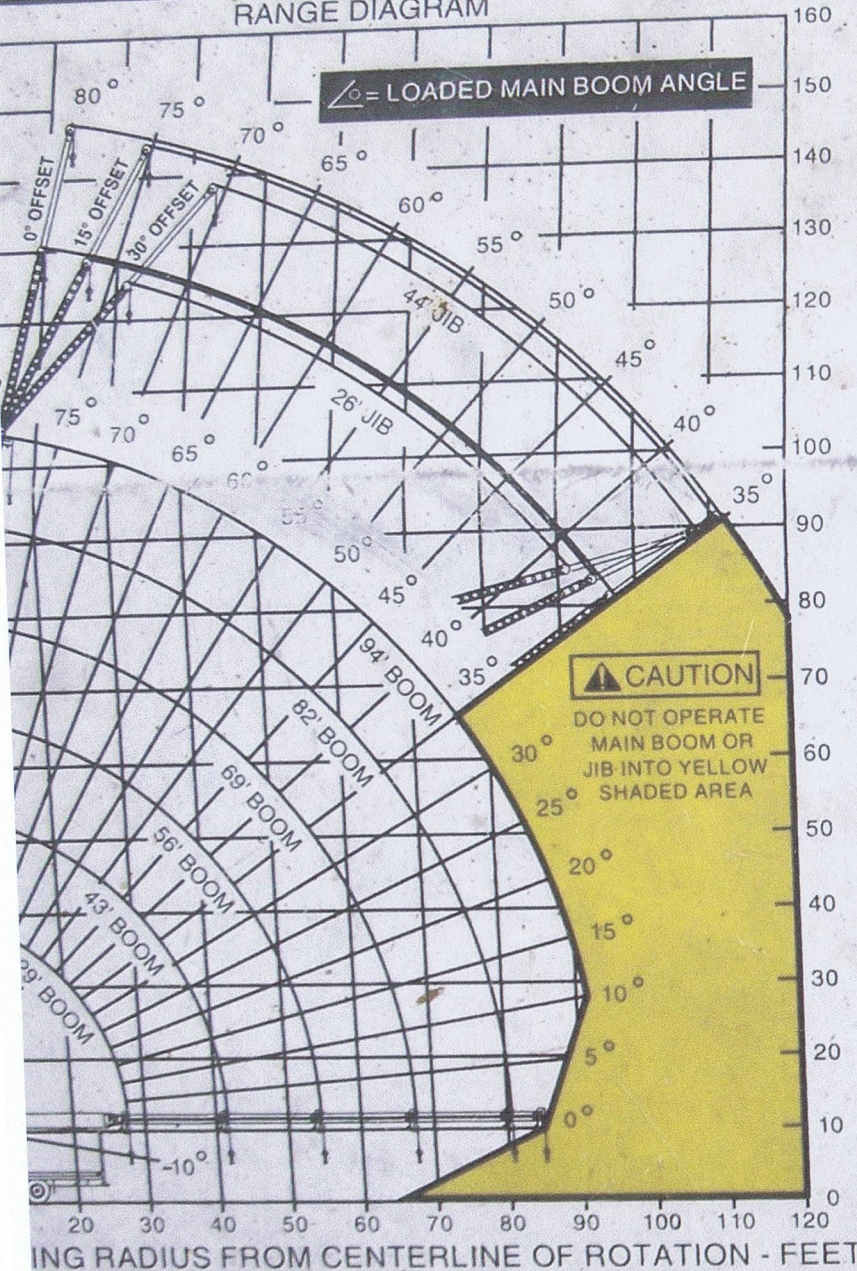


RANGE DIAGRAM

\angle = LOADED MAIN BOOM ANGLE



BOOM LOAD RATING IN LBS. WITH OUTRIGGERS EXTENDED AND MACHINE LEVEL

RAD FT.	\angle	29 FT BOOM	\angle	43 FT BOOM	\angle	56 FT BOOM	\angle	69 FT BOOM	\angle	82 FT BOOM	\angle	94 FT BOOM
5	80	a)55000										
8	73	35220										
10	69	29720	76	22200								
12	65	25920	74	22200	78	21340						
14	60	23170	71	19664	76	18710	79	17550				
16	55	20930	68	17480	73	16350	77	15850				
20	44	17500	61	14400	69	13170	74	12600	77	12250	80	11150
25	24	13900	53	11870	63	10780	69	10000	73	9560	76	9380
30			44	9980	57	9050	65	8380	70	7800	73	7585
35			33	8515	51	7740	60	7100	66	6620	70	6300
40			16	6800	44	6735	55	6150	62	5700	66	5370
45					35	5840	49	5360	58	4900	63	4610
50					24	4930	43	4690	53	4260	59	4000
55							36	4100	48	3750	55	3500
60							28	3530	43	3290	50	3050
65							16	2800	38	2880	47	2670
70									31	2475	43	2330
75									23	2040	38	2020
80									7	1250	32	1720
85											25	1400
90											15	950
MAX. PARTS OF LINE		6		4		3		3		2		2
JIB DEDUCTION LBS.		480		325		250		200		165		145

SHEAVE HEIGHT - FEET

JIB LOAD RATING IN LBS. WITH OUTRIGGERS EXTENDED AND MACHINE LEVEL

RAD FT.	\angle	26 FT 0° OFFSET	\angle	26 FT 15° OFFSET	\angle	26 FT 30° OFFSET	\angle	44 FT 0° OFFSET	\angle	44 FT 15° OFFSET	\angle	44 FT 30° OFFSET
30	77	5850					77	3350				
35	75	5100	78	3550			75	3100				
40	73	4500	75	3400	78	2750	73	2850	77	2050		
45	70	3850	73	3250	75	2600	71	2650	75	1950	79	1375
50	67	3300	70	3000	73	2450	69	2450	73	1850	76	1300
55	65	2800	68	2750	70	2300	67	2200	71	1750	74	1250
60	62	2450	65	2500	67	2150	67	2000	68	1650	72	1200
65	59	2100	62	2200	64	2000	64	2000	66	1550	69	1150
70	56	1800	59	1850	61	1850	62	1800	66	1550	69	1150
75	53	1500	56	1550	58	1650	59	1600	64	1450	67	1100
80	49	1250	52	1300	55	1350	57	1450	61	1350	64	1050
85	46	1000	49	1050	51	1150	54	1250	58	1250	62	1000
90	42	800	45	850	47	950	51	1100	56	1150	59	950
95	39	600	41	700	43	750	48	900	53	1000	56	900
100	34	390	37	500	38	550	45	750	49	850	52	825
105							42	550	46	675	49	700
110							38	400	43	550	45	550
115											41	450

WARNING
 MIN. 320 FEET OF CABLE REQUIRED ON THIS MACHINE
 a) 9/16 DIA 6X25 EIPS IWRC 33600 LB BREAK STRENGTH 3.5 SF (STD)
 b) 9/16 DIA ROTATION RESISTANT 37000 LB BREAK STRENGTH 5.0:1
 KEEP AT LEAST 3 WRAPS OF LOADLINE ON DRUM AT ALL TIMES
 ANTI-TWO-BLOCK SYSTEM MUST BE IN GOOD OPERATING CONDITION BEFORE OPERATING CRANE. REFER TO OWNER'S MANUAL
 THIS MACHINE WAS MANUFACTURED TO MEET OSHA REGULATIONS 1910.180 AND 1926.550 WHERE APPLICABLE AT THE TIME OF PRODUCTION

CAUTION
 DEDUCTIONS FROM RATED LOADS FOR LOAD HANDLING DEVICES SUPPLIED BY PIONEER ENGINEERING
 SINGLE SHEAVE LOAD BLOCK _____ 210 LBS.
 DOUBLE SHEAVE LOAD BLOCK _____ 340 LBS.
 TRIPLE SHEAVE LOAD BLOCK _____ 380 LBS.
 OVERHAUL BALL _____ 170 LBS.

PIONEER ENGINEERING
 301 DUCK ROAD, GRANDVIEW, MISSOURI USA 64030

SERIES 4000
LOAD RATING CHART
 63-00010 C